

● ● ● | **Visits are
Welcome**



Location

Comprehensive Cancer Center
Laboratory #5
San Juan, PR 00935
Phone: (787)772-8300 Ext. 1411

Contact People:

Loyda Melendez, MT, MS, PhD
loyda.melendez@upr.edu
Director

Ana E. Rodriguez, MS
ana.rodriguez48@upr.edu
Research Assistant

Yadira M. Cantres, MS
yadira.cantres@upr.edu
Research Assistant

Visiting hours are Monday through Friday from 9:00 AM to 4:00 PM. Visitors need to contact the staff in advance. For the use of the equipment you must be an RCMI registered user. The core can help with the registration process for all users.

Acknowledgment

“Research infrastructure support and services in proteomics were provided, in part, by the grant U54MD007600 from the NIHMD and by the PR-INBRE program Supported by IDeA from the National Institute of General Medical Sciences of the National Institutes of Health under grant number P20GM103475”.



Translational Proteomics Center (TPC)



Dr. Loyda Melendez Professor and Director



University of Puerto Rico
Medical Sciences Campus
CCRHD Program
INBRE Program
Comprehensive Cancer Center



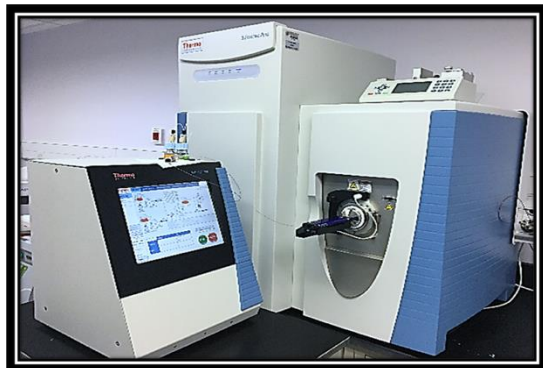
About the TPC

The Translational Proteomics Center (TPC) is a core facility supported by RCMI, INBRE and the Comprehensive Cancer Center of the UPR-Medical Science Campus.

The TPC has two main components: proteomics services and available instrumentation.

The mission of the TPC is to enhance the current capacity for biomedical research in proteomics in Puerto Rico. We are equipped with a Q Exactive™ Hybrid Quadrupole Orbitrap Mass Spectrometer from Thermo Fisher Scientific. This is the backbone of the proteomics platform for the rapid discovery of multiple biomarkers, protein identification, quantitation and post-translational modifications. The TPC has incorporated TMT labelling as the main technique for global protein quantitation, using our high resolution mass spectrometer showed below.

Easy nLC 1200 Q Exactive Plus



Services and Fees

Service	Fee
BCA (Total Protein Quantitation)	\$50/Microplate
Depletion of most abundant proteins, up to 25 samples per kit.	\$500/Kit or \$20/Sample
Sample Preparation for in-gel processing <ul style="list-style-type: none"> ❖ Short run SDS-PAGE ❖ Coomassie Stain 	\$50/gel
Sample Processing for Mass Spectrometry by In-gel Digestion <ul style="list-style-type: none"> ❖ Reduction and Alkylation ❖ Enzymatic digestion in-gel ❖ Peptide Extractions 	\$15/Sample
Sample Processing for Mass Spectrometry by In-solution Digestion <ul style="list-style-type: none"> ❖ Reduction and Alkylation ❖ Enzymatic digestion in-gel ❖ Peptide cleaning (when required) Up to 20 samples per kit.	\$650/Kit (Thermo) or \$5/Sample
Protein Identification <ul style="list-style-type: none"> ❖ Analysis by LC-MS/MS ❖ Proteome Discoverer Data Search 	\$20/Sample
Quantitative Proteomics: <ul style="list-style-type: none"> ❖ Peptide tagging (TMT labeling) ❖ Analysis by LC-MS/MS (Easy nLC 1200/Q-Exactive Plus) ❖ Peptide Fractionation ❖ Proteome Discoverer Data Search 	\$1,450/TMT11plex
Proteomics Abstract and Manuscripts Revision	Free

An initial consultation with Dr. Melendez is required. Visit our page for more information:
<https://rcmi.rcm.upr.edu/proteomic-page>
<https://inbre.hpcf.upr.edu/index.php/cric-core/>

Instruments Open for Registered Users

Sorvall ST 16R Centrifuge / Sorvall WX Ultracentrifuge



Tuttnauer EZ9 Autoclave / Vacufuge



ChemiDoc MP Imaging System



Varioskan Lux

